

**2016 BOARD OF DIRECTORS**

Kevin Dukes—President  
W: 843-524-3109  
kdukes@harveyandbattey.com  
\*\*

Mark Weeks - Vice President  
843-525-8439  
Mjweeks84@gmail.com  
\*\*

Pat Harvey Palmer – Treasurer  
Fire & Safety  
W: 843-522-0066  
pharveypalmer@islc.net  
\*\*

Cathy Crocker—Secretary  
H: 843-838-0897  
cfmcrocker@gmail.com  
\*\*

Paul Sommerville  
County Council  
H: 843-521-0827 or  
C: 843-575-0827  
psommerville@hargray.com  
\*\*

Paul Butare  
Transportation Committee  
C: 803-586-1132  
paulb4333@gmail.com  
\*\*

David Striebinger  
School Board Representative,  
District 2  
843-694-7743  
davidstriebinger@beaufortk12.sc.usc  
\*\*

Jason Hinchler  
Planning Commission  
C: 843-575-5248  
mbijch@islc.net  
\*\*

Jim Hicks  
(Newsletter)  
H: 522-3988  
jbhicks@hargray.com  
\*\*

Peggy Allard  
Friends of Crystal Lake  
W: 271-7298  
allardandassociates@earthlink.net  
\*\*

Judy Smith - Newsletter Publisher  
W: 522-0066  
LIBPA.News@hotmail.com  
hometown@islc.net  
\*\*

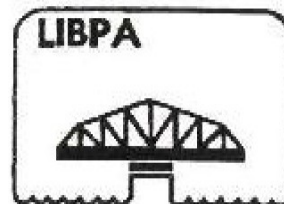
Steve Thompson  
LIBPA Webmaster  
W: 521-4985  
thewebguy@earthlink.net

LIBPA website: [www.libpa.org](http://www.libpa.org)

Facebook  
<https://www.facebook.com/pages/LIBPA/491864100899575?ref=hl>

**IBPA**

**HAPPY NEW YEAR**

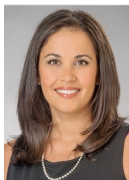


LIBPA Website: [www.libpa.org](http://www.libpa.org)

January 2017

**GUEST SPEAKER FOR JANUARY**

**Maria Walls  
Beaufort County Treasurer**



Ms. Walls was elected Beaufort County Treasurer in November 2014. Before assuming the office of Treasurer she served four years as Deputy Treasurer. Prior to joining the Treasurer’s office she worked in public accounting as an auditor for a multinational CPA firm. Upon her arrival in Beaufort County she worked for a local CPA firm. She is a Certified Public Accountant (CPA) and graduated Cum Laude with a Masters of Accounting, with a specialization in international Business from Rider University in New Jersey. In 2015 she was named Office Holder of the Year by Thomas Reuters for having achieved excellence in planning, leadership and service as Beaufort County Treasurer. Her professional affiliations include the South Carolina Association of Certified Public Accountants and Toastmasters International.

Ms. Walls has been requested to include in her discussion with our members the following subjects.

- What challenges were you faced with upon taking office?
- What is the functional relationship between the Auditor and the Treasurer?
- What was the result of your review of individual vehicle tax accounts?
- What are the biggest challenges for the Treasurer’s office in the future?
- In your opinion should the Treasurer be an elected or hired position?

**Meeting: Tuesday, January 10, 2017 at 8 AM  
Beaufort County Realtors Headquarters  
22 Kemmerlin Lane  
Palmetto Business Park  
Lady’s Island Drive  
Open to the Public!**

**LIBPA MEMBERSHIP REMAINS STEADY IN 2016**

At the beginning of each year we ask our members to continue an active membership in the Lady’s Island Business and Professional Association by paying their annual dues (\$45). Although, the residential membership has remained relatively stable over the last few years we have experienced a decline of business membership since the housing industry and the economy took a nosedive in 2007. The following chart provides an overview of membership since 2008.

Category	Membership History									
	2008	2009	2010	2011	2012	2013	2014	2015	2016	
Business	155	146	131	126	122	114	114	108	105	
Residential	53	53	51	50	47	44	45	44	44	
<b>Total</b>	<b>208</b>	<b>199</b>	<b>182</b>	<b>176</b>	<b>169</b>	<b>158</b>	<b>159</b>	<b>152</b>	<b>149</b>	

If LIBPA is to serve as a valid voice of the community its membership must be truly representative of the businesses and residents on the island. We do not have a designated member that visits new businesses, tells them about the role of LIBPA in the community and invites them to become members. The membership program of LIBPA relies 100% on its members encouraging their business associates and neighbors to join them as an active members. So, please take a few minutes and share your monthly newsletter with a prospective member and invite them to attend one of the monthly meetings.



## 2017 A YEAR OF NEW CHALLENGES AND OPPORTUNITIES

Each year the Lady's Island Business and Professional Association ask various key individuals in our community to share their thoughts as to the year we have just completed and what the new year may bring in the way of challenges and opportunities. Following are some of their responses.

### PAUL SOMMERVILLE

Chairman County Council and District 2 Council Representative



Beaufort County survived the devastation of Hurricane Matthew. We were prepared but not perfect. We will be even better prepared should we ever (God forbid) face another hurricane or other natural disaster. Long before Matthew's arrival, Beaufort County had taken many steps in preparation. We knew that it would be difficult or even impossible to borrow money if our tax base was destroyed by a hurricane so we had accumulated financial reserves in excess of \$26 million dollars and an additional line of credit of \$10 million dollars. As it turns out, this was very fortuitous because it looks like Beaufort County will be shelling out somewhere in the neighborhood of \$30+ million dollars in recovery and cleanup expenses before any FEMA reimbursement starts trickling in. Beaufort County also had a long-standing contract with a debris removal contractor and a FEMA consultant (yes, you need a FEMA consultant to navigate all of the mind numbing FEMA rules). In my humble opinion (IMHO), that is good planning.

The Governor was absolutely correct to order an early evacuation. Those of us who have experienced "last minute" evacuations, know what a quagmire our roads can quickly become when everyone is attempting to leave at the same time. The return was more challenging because when the Governor lifted the evacuation order and announced that we could all return to our homes, she failed to mention that the decision regarding when residents of various areas of our county could return to their respective homes was being transferred to the Beaufort County Sheriff for a final decision. This led to long lines of extremely unhappy residents who were told by law enforcement officers that the Governor's statement notwithstanding, the Sheriff had not yet authorized return to several parts of the county due to unsafe conditions such as impassable streets, downed power lines and fallen or leaning trees.

As we anticipated, obtaining FEMA reimbursement is more art than science. Over half of the roads in Beaufort County are private roads and FEMA regulations specifically exclude debris removal on private roads from any reimbursement. Obviously, we could not refuse to assist some of our citizens simply because they live on private roads, so County Council had to take some decisive and risky steps in order to assist our citizens who live on private roads with debris removal. Because of these efforts by County Council, Beaufort County will be at least partially reimbursed for the cost of debris removal on both public and private roads. The Island News (November 10-16 edition) has written an in depth article on that challenging process. Beaufort County is also working with our legislative delegation to seek reimbursement from the state for the portion of cleanup costs that will not be reimbursed by FEMA. Bill Herbkershman, Chairman of the House Ways and Means Committee is working very closely with us in this regard.

To put some perspective on the massive nature of the cleanup operation, over 1 million cubic yards of debris will be picked up on public and private roadways in Beaufort County excluding Hilton Head. On Hilton Head, over 3 million cubic yards of debris will be picked up. Over 55,000 hanging limbs have been removed and over 2600 leaning trees taken down excluding Hilton Head. Obviously, even a small portion of this debris would overwhelm any landfill within driving range so all of this debris is being staged at 6 different locations throughout the county. Burning is taking place at 3 of the locations and grinding at the other 3.

Marine debris removal is a challenge because the county lacks jurisdiction below mean low water so the county is involved in ongoing discussions with the various state and federal agencies that do have at least some jurisdiction. These agencies include SCDNR, the US Coast Guard, SCDHEC/OCRM and the USACE (Corps of Engineers).

As we return to normal, we will have to determine the rate at which we replace the county's reserve funds that have been and will be expended but that will not be reimbursed. Reserve funds serve two primary purposes. The first is to deal with unbudgeted emergencies (such as hurricanes and other natural disasters) and the second is to satisfy our bondholders and their attorneys which keeps our credit rating high and our bond interest rates low and saves taxpayers money. Depending on the rate at which we ultimately determine to replace our reserves and how successful we are in getting maximum FEMA and state reimbursement, county operating millage may be impacted.

2016 has been a challenging year and there are challenges ahead for 2017. We are still a fast growing county which means that we will constantly need repairs and upgrades to our infrastructure and our schools. All of this costs money. This is why the county, in collaboration with the municipalities, are working hard to attract economic development to Beaufort County to provide jobs for our children and to relieve some of the tax burden from our primary and secondary homeowners. I have commented on this topic in some depth at the Beaufort County State of the Region meeting in Hilton Head. My remarks can be viewed at <https://www.youtube.com/watch?v=1D2Bwn2ywtw>

## JEFF MOSS

Superintendent Beaufort County School District



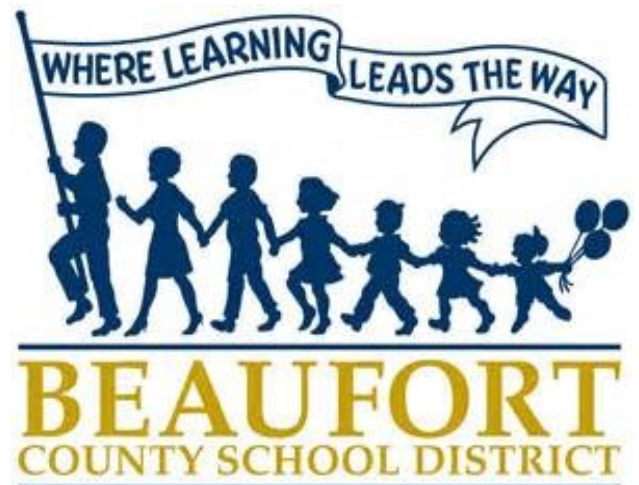
The Beaufort County School District experienced significant academic improvements in 2016 along with financial efficiencies that continue to save taxpayer dollars. The year's biggest news was a sixth consecutive year of improvement in the district's high school graduation rate, which has reached an all-time high of 83.4 percent and now exceeds the state and most recently reported national measurements.

The on-time graduation rate is the percentage of students earning a diploma "on time" in four years. It's a high-profile indicator because if all of a school system's components are working well, from kindergarten through high school graduation, then more students should earn their diplomas in four years. Six straight years of increasing graduation rates is solid proof of the district's improvement across the board, and our educators, students, parents and entire community should be proud of that. Other positive indicators of a steadily improving school district include:

- Class of 2016 graduating seniors earned \$30.9 million in college scholarships, also an all-time high.
- The district's average SAT score has improved by 61 points over the past five years, and African-American seniors have reduced the achievement gap with white seniors by improving their scores by 87 points while white students improved by 30 points.
- Fifty-five percent of our high school students taking Advanced Placement courses scored high enough in 2016 to qualify for college credit, another all-time high for the district. The number of students completing college-level courses while still in high school has increased from 308 to 532 in just two years.
- Roughly 9 out of 10 district 11th-graders scored high enough on the 2016 statewide administration of WorkKeys exams to qualify for certificates that they can use to apply for jobs anywhere in the nation. BCSD students outperformed their peers from most other districts.
- The district has created "schools of choice" in all buildings. Parents can apply to send their children to any academic program in the district, regardless of where they live. For the 2016-17 year, more than 2,300 students are enrolled in schools outside their attendance zones. In addition, our Connect2Learn program has put a mobile computer in the hands of every student in grades K-12.
- The district has added 260 full-day prekindergarten slots over the past two years, which has allowed schools to reduce or even eliminate waiting lists of at-risk children who need focused attention before they start classes. The district earned the statewide Champions for Children Award from the Institute of Child Success for its efforts to improve early childhood education.
- Two new cutting-edge schools serve the fast-growing Bluffton community: PreK-Grade 8 River Ridge Academy and May River High School.
- National publications rank two district high schools among South Carolina's best. Hilton Head Island High is ranked No. 5 in South Carolina by U.S. News and World Report, and Bluffton High is ranked No. 7. In addition, Hilton Head Island High ranked No. 6 in South Carolina and Bluffton High No. 12 in The Washington Post's annual listing of "America's Most Challenging High Schools."
- Our college scholarship program - the "Building a Better Beaufort Scholarship, also called "B3" - pays up to two years of tuition costs at the Technical College of the Lowcountry for qualified local high school graduates.
- We are dramatically expanding career and technology courses designed to prepare students for high-paying jobs and industry certifications in rapidly emerging fields. New high-tech facilities are operating at Battery Creek High and May River High.
- We continue to see significant savings from smart financial decisions in recent years, as well as from the installation of cutting-edge technology that conserves electrical power and water.

The one-penny educational sales tax referendum in November 2016 wasn't successful, but the district's needs - how to accommodate an additional 3,000 students over the next decade as well as replace outdated roofs and HVAC systems - remain unchanged. A key challenge for the Board of Education in 2017 will be determining how to meet those needs. Other challenges will include addressing achievement gaps between minority and nonminority students, as well as recruiting teachers to work in Beaufort County despite our highest-in-the-state cost of living.

Beaufort County's schools continue to benefit from broad community support. We have dramatically improved the district's security screening process for school volunteers and, at the same time, increased the number of volunteers from 1,300 to more than 6,500 in the last two years. That kind of community support, coupled with the creativity and determination of our hard-working students and educators, make me confident that the improvements we saw in 2016 will continue in 2017.



**David Striebinger**  
District 2, School Board Representative



Goodbye 2016, Hello 2017! At this time of the year I have made it a personal practice to take time to reflect on the highlights and the missteps of the previous year and then look forward to the New Year with those recollections fresh in my mind. I hope that habit will also serve us well in our duties as Beaufort County School Board members.

If nothing else, 2016 was an eventful year for the District and the School Board. We certainly received more than our normal share of publicity, predominately negative, for events including the State Ethics Commission investigation of the Superintendent and the Commission's findings, the resignation of our Board Chairman, continued friction, acrimony, and apparent dysfunction on the Board, a muddled future for the Academy for Career Excellence (ACE) and, of course, the sales tax referendum. Some of these are, hopefully, one-time events but the need for funding and the way the Board functions are ongoing issues that will need to be dealt with in the coming year. These are things we have the ability to address and resolve. As we close out 2016 we have reached agreement with the Jasper County School Board on the future of ACE so we have a head start on a productive 2017.

Unfortunately these events overshadowed numerous positive accomplishments delivered by the students and teachers of the District. Numerous awards, grants and continued improvements in meeting our educational goals were certainly highlights of the past year. Test scores and graduation rates continued to climb and significant progress continued on closing the achievement gap. Our graduates received a record amount of scholarships and grants this past year. Our own Coosa Elementary received the Lighthouse designation, a prestigious international award for outstanding implementation of the Covey principles of leadership. So now we move forward.

The top priority for me this coming year will be to pivot our thinking to our most critical and valuable resource, our teachers. We need to commit to the same level of effort we expended on the sales tax initiative. We need to develop a comprehensive plan to recruit and retain outstanding teachers. I am hoping we can develop a plan instead of trying to address the issue in a piecemeal fashion. The full plan needs to address all of the factors which may include compensation structure, recognition and rewards, an outstanding supportive workplace environment, recruiting focus and any other ideas we can get from our current teachers and our exit interview data. If we can have a well developed and multi-pronged approach and make our commitment clear and unwavering we will see the results that all of us agree are needed. I have requested that this initiative be put on the agenda for the Human Resources Committee to work through as soon as possible.

Another challenge we have ahead of us is accommodating the rapid enrollment growth that is being projected for the coming years especially in the Bluffton area. Of course, if we don't accomplish the teacher objective the building of new facilities is a moot point. We have a five and ten year plan that needs to be revisited and we have to regroup on the funding source to meet these projections. As you know, the sales tax and the accompanying bond issue referendum were soundly defeated by the voters this year. As a board, we need to analyze all of the possible reasons for this rejection by the taxpayers and reset our thinking. If we don't learn all we can from this past election we are really handcuffing ourselves and our ability to successfully support our students will suffer. We will need to evaluate all of the options available to us to move forward. This evaluation has to include focusing on critical needs and the best financing tool for the tax payers. I am certain the taxpayers will support the School District if we do our due diligence and keep our responsibility for financial stewardship at the forefront of our deliberations. Our community has always supported our efforts to build an outstanding School District and I don't think that has changed.

Another major challenge we must deal with is the functioning of the Board itself and our relationship with the Superintendent. We certainly have a lot of room for improvement in this area and it is essential that we do a turnaround. Last year we overhauled our policies which hadn't been updated for quite some time and this coming year we have other foundational items to deal with such as updating our Strategic Governance Plan which has a "Results" component last updated in 2010. Policies and plans will not alter the behavior problems we have all too frequently displayed at our Board meetings. This problem will only be resolved by a shift in leadership style that is inclusive, that seeks to diffuse confrontations and that displays more tolerance for dissenting views. With the addition of two new members we have an opportunity to reset the dynamics, become more efficient and effective and hopefully shift attention away from the Board and on to the positive accomplishments of our students and teachers. I am very optimistic this will happen early in the New Year.

As in every year, I, and the entire School Board, welcome feedback and ideas from Beaufort County citizens and I hope you will get involved, volunteer and flood my inbox with emails.

P.J. TANNER  
BEAUFOR COUNTY SHERIFF



The past year brought many challenges to the residents and government agencies within Beaufort County, most prominent being Hurricane Matthew. Beaufort County had not experienced a hurricane evacuation since 1999 or a reentry since 1959 and in retrospect some things went right and some wrong. As Hurricane Matthew approached the Eastern Coast with a projected path that included Beaufort County, residents and visitors were urged to leave prior to the Governor's mandatory evacuation order set for Wednesday October 5<sup>th</sup> at 3:00 PM. Hurricane Matthew held its projected course and Sheriff's Office Emergency Management monitored traffic, noting many residents and visitors heeded the advice and left ahead of the mandatory order. Even after the Governor's order went into effect on Wednesday, law enforcement officers and South Carolina National Guard troops posted at the traffic control points remained on standby, due to the unexpectedly smooth flow of traffic leaving Beaufort County. Residents and visitors continued the orderly evacuation until Hurricane Matthew grew dangerously close late Friday afternoon, when emergency personnel retreated to the various safe shelters.

On Saturday morning Hurricane Matthew bore down and caused damage from wind, rain and flooding not seen in Beaufort County in well over fifty-years, but amazingly no lives were lost. In the morning hours public safety personnel emerged from their safe shelters and began to reenter and evaluate the damage to Beaufort County's infrastructure. Many main and side roads throughout the County were inaccessible from downed trees and power lines and the vast majority of residential areas were without power and water. Due to an overwhelming effort on the part of public safety, National Guardsman and highly motivated public service and utility crews, the main roads were cleared and power was restored rapidly. Crews worked non-stop and on Sunday plans were made to allow residents waiting at the various reentry checkpoints back into Beaufort County. The plan had flaws, first and foremost was the breakdown in communication between state, county and municipal agencies involved in the reentry. The public received mixed messages of reentry from the agencies further exacerbated by social media. The Sheriff's Office is in the process of evaluating our evacuation and reentry plans to address and improve any shortcomings in communications with other agencies, our citizens and the unanticipated major impact of social media observed over Hurricane Matthew.

The Sheriff's Office would be remiss not to mention the extraordinary efforts of the part of the citizens who remained behind during Hurricane Matthew and ultimately further illustrated Beaufort County's sense of community. There are many examples of citizens clearing roads of massive downed trees with their own chainsaws and tools. Without their unsolicited and selfless efforts, utility crews would not have been able to restore power, water and other crucial infrastructure to Beaufort County in such expeditious fashion. The Beaufort County Sheriff's Office appreciates all of the patience and support our citizens have shown throughout Hurricane Matthew. In the coming year we look to continue to evaluate and implement best practices to improve on our readiness in the event of a future disaster.

---

**CITY TO ANNEX SECESSION GOLF COURSE AND A NUMBER OF LADY'S ISLAND BUSINESSES**  
**By Jim Hicks, Chairman, Lady's Island Community Preservation Committee**

Just before Christmas the City of Beaufort announced that it was annexing Secession Golf Course on Gibbs Island consisting of its club house, golf course, 15 member owned cottages and 30 vacant residential lots. Also to be annexed are 10 businesses along Sea Island Parkway. The businesses include 2 banks (Wells Fargo and CBC National), the Filling Station, Butler Marine, a Shell gas station, the former movie theater adjacent to the High School, Zippy Lube, a dentist office, the Packing Shed (next to the Walmart site) and across the street the property at the intersection of Lost Island Road and the Sea Island Parkway (the Dive Shop). These annexations will be open to public comment on January 24, 2017 at a public hearing at 7 PM in the Council Chamber at Beaufort City Hall. Are these annexations good or bad for the Lady's Island community or do they make any real difference?

Before answering the question of how the proposed annexation affects Lady's Island a bit of history is in order. The City of Beaufort has been annexing property on Lady's Island for a good number of years. For example, in 1999 the City of Beaufort initiated annexation of Cane Island. It announced the proposed annexation on a Monday and on Tuesday City Council gave the first vote on the matter causing a great deal of animosity between the County and the City. The annexation of Cane Island led to annexation of a portion of Distant Island and eventually the present Walmart site. Since the Cane Island annexation the City of Beaufort has annexed other properties in the Lady's Island Village Center. In an effort to reduce animosity over annexation between the county and the northern municipalities the Northern Regional Plan was developed. One of the key things the plan accomplished was the establishment of municipal growth boundaries in which annexation by municipalities was authorized. Lady's Island is within the City of Beaufort's growth boundary and thus annexation of property on the island is proper and legal. The present City administration prefers to annex only commercial property but this could change with another administration.

The recently announced annexations will increase the number of Lady's Island businesses within the City of Beaufort. The relationship between the county, Lady's Island and the City of Beaufort has significantly improved since 1999. Whether the proposed annexations are good or bad for Lady's Island depends on the attitude of the City of Beaufort in regard to provision of services. If, in spite of not every business choosing to be in the City, the City takes the high road and cleans the streets and sidewalks, increases the level of police presence, considers traffic impacts of its actions and plans for a general upgrade of the commercial portion of Sea Island Parkway it will be a very good thing. The County is not organized to provide municipal services of this type and is not going to provide them. If on the other hand Lady's Island is looked at simply as a source of revenue for the City of Beaufort there is no benefit to the community in general from the additional annexations. Time will tell.

## EDITOR'S ANNUAL NOTE

At the end of each year, as editor of the Lady's Island Business and Professional Association monthly newsletter, I take this opportunity to thank a variety of folks for their support and attempt to take an objective look at the newsletter. When honestly evaluating the newsletter the first question that arises is does it serve a valid purpose? If, serving as a vehicle to keep the Lady's Island residents and businesses better informed about those subjects that affect the community is deemed a valid purpose the next question is "can we do it better". I have had the privilege of serving as editor of the newsletter for the past 16 years and during that time significant changes have occurred to both our community and the way information is shared and consumed. In an effort to keep up with these changes we have gone from mailing a single page newsletter to each member to transmitting 75% of the newsletters to our members via email, using an internet site to share information with the community and maintaining a LIBPA Facebook page. Even with these efforts to keep the newsletter relevant in today's world there is a nagging suspicion that when it comes to distribution of information we (LIBPA) may be faced with a generational gap both in the type of information provided and the manner in which it is provided. So back to the question of whether the newsletter serves a valid purpose – I hope so but the real answer lies in the number of businesses and residents who support the Lady's Island Business and Professional Association with their membership. As to whether we can do better, we will certainly try and are always open to your suggestions.

I must thank Judy Smith who has served as publisher of the newsletter and keeper of the LIBPA Face Book page. In this role each month she accepts a pile of articles and almost magically transforms them into a newsletter which she then distributes. Pat Harvey Palmer continues to allow Home Town Realty to serve as LIBPA headquarters. Steve Thompson, President of P. C. Web Services, continues to contribute and maintain, free of charge, the LIBPA web site and Realtor Everett Ballenger provides monthly articles on the local real estate market. A special thank you is extended to those members of the community who share their thoughts and opinions in the form of articles for the newsletter. Finally, a note of personal appreciation to each of you who provide comments and opinions as the content of the newsletter. Thank you for the gracious, courteous and often humorous manner in which you share your opinions. To each member of the Lady's island Business and Professional Association your continued membership and support is what make the newsletter and the organization's efforts on behalf of the community possible. So together let us try another year of producing a worthwhile community newsletter.

Thanks,



## A GREAT PROBLEM TO HAVE TOO MANY WHICH MERIT COMMUNITY SPIRIT AWARD

At the end of each year the Lady's Island Business and Professional Association invites members of the community to nominate an individual, business or organization that through their actions merits recognition in the form of a Community Spirit Award. In the past, the selection of a recipient of this award has often been difficult but a single nominee's actions or contribution has always stood out to the point of allowing the selection of an award recipient. As a result of Hurricane Matthew and the gracious and generous actions by so many to help their community and neighbors one single individual or organization simply cannot be identified without slighting an equally worthy recipient. So please allow us to take this way of publicly acknowledging and thanking all of the members of our community who prior to, during and following Hurricane Matthew exemplified through their actions the highest level of community spirit. It is each of you who deserve the Lady's Island Business and Professional Association 2016 Community Spirit Award. Since we cannot recognize each one of you please allow us to mention just a few which include:

- The many neighbors who helped their neighbors.
- The law enforcement officers who guarded our property in our absence and guided our evacuation and return.
- The fire and medical first responders.
- The teams of linemen and electricians who worked so hard to reestablish our electricity.
- The teams that removed and continue to remove the debris from the hurricane.
- Our elected officials and government employees who guided efforts to protect the community before, during and after Hurricane Matthew.

**TO EACH OF YOU WHO, BY YOUR ACTIONS TO HELP OTHERS DURING HURRICANE MATHEW, EXEMPLIFIED THE TRUE MEANING OF COMMUNITY SPIRIT. PLEASE KNOW THAT YOUR CONTRIBUTIONS WERE SINCERELY APPRECIATED AND IN OUR OPINION YOU EACH DESERVE THE 2016 COMMUNITY SPIRIT AWARD.**

## CITY DESIGN REVIEW BOARD GRANTS NEW TACO BELL CONCEPTUAL APPROVAL

Representatives of Taco Bell appeared before the City of Beaufort Design Review Board (DRB) at their September 8th meeting, requesting conceptual approval for construction of a 2500 square foot restaurant with a drive-thru at the intersection of Lost Island Road and Sea Island Parkway. At that meeting the members of the board asked for additional information regarding the handling of stormwater, traffic impact and the amount of fill dirt needed for site preparation, and postponed any decision pending receipt of the requested information. At the December 8th meeting of the DRB Taco Bell representatives presented the requested information along with a modified plan for site preparation that included reducing the amount of fill needed by waterproofing a portion of the building. The board granted conceptual approval of the project with final approval being contingent on inclusion of some recommended changes, receipt of additional information regarding modified setbacks from the road to eliminate the need for retaining walls, an additional graphic representation of the building from Sea Island Parkway, and incorporation of the recommendations of the Traffic Impact Analysis (TIA) review into the site plan. The TIA review is being done concurrently with the Lady's Island Corridor Study to ensure that they are coordinated and that the approved Taco Bell site plan will accommodate any recommendations that are a result of the study.

## PUBLIC SERVANTS WE WILL MISS IN THE NEW YEAR

The New Year finds us congratulating some friends of Lady's Island on their retirement and knowing that as they transition into a less stressful life we will miss them and their support of our community. Such individuals include:

George O'Kelly - In addition to his private law practice Mr. O'Kelly has served as a Judge and as a member of Beaufort City Council. A retired Marine Corps Lt. Colonel with a local law practice during times of heightened disagreement between Lady's Island and the City of Beaufort as a result of the "annexation wars" his door was always open to listen to the concerns of our community and could always be relied upon for fair and objective action as a city councilman. He will be replaced on City Council by Mrs. Nan Sutton.

Phyllis White – That the Beaufort County School District recently received an exemplary financial review by an outside auditor for the 17<sup>th</sup> year is no accident. Ms. White has been with the School District since 2000 and served in various positions to include that of Chief Financial Officer. Her ability to present extremely complicated financial information in an understandable format which when combined with her reputation for integrity in all matters provided the School District with a superb spokesperson. Always open and responsive to funding related questions by LIBPA she was a "breath of fresh air" in what could have been a bureaucratic maze. A search is underway by the School District for her replacement.

William (Bill) L. McBride – For over 40 years Mr. McBride has been the voice of St. Helena on Beaufort County Council. With redistricting into what is today District 3 he also became the council representative for a portion of Lady's Island and a portion of the City of Beaufort. A retired school teacher his history of public service is an example to everyone. During the turbulent periods of the history of Beaufort County as it transitioned from a rural, poor community to the fastest growing county in South Carolina Mr. McBride, always a gentleman has served on County Council as a quiet voice of reason and intelligence. He will be replaced as the District 3 representative on County Council by Mr. York Glover.

Reed Armstrong – Since 2001, when he joined the Coastal Conservation League, Mr. Armstrong was the face of the Beaufort branch of the League at most local government meetings on the subjects of the environment or land planning. The combination of his knowledge as an oceanographer and 30 years of experience with NOAA insured his contributions on these subjects always merited consideration. He will be replaced in the local branch of the Conservation League by Ms. Rikki Parker.

To each of these individuals we extend our sincere appreciation for their contribution to our county and our community and wish them a great new year.

## COASTAL CONSERVATION LEAGUE AND SEA ISLAND COALITION TO HOST LADY'S ISLAND COMMUNITY FORUM



The Sea Island Corridor Coalition and Coastal Conservation League are excited to announce a community forum focused on rethinking the future of Lady's Island and the Highway 21/Sea Island Parkway corridor. The public is encouraged to attend to discuss issues related to development, traffic and community preservation.



What: Designing a Future for Lady's Island: Community Forum  
Who: Victor Dover, FAICP, Dover, Kohl & Partners, author of the Port Royal revitalization plan, the Boundary Street plan in Beaufort, the neighborhood of I'On in Mount Pleasant, the "Rethink Folly Road" corridor plan, and co-author of Street Design: The Secret to Great Cities and Towns.

Josh Martin, AICP, CNU-A, is Senior Advisor to the Mayor on the Built Environment in the Charleston, South Carolina. Josh has managed numerous strategic real estate development projects including complex mixed-use urban infill projects. He previously served as the Town of Bluffton Senior Planner, Community Development Director, and Town Manager, focusing on the Old Town Bluffton redevelopment plan.

When: Thursday, January 12, 2017, 6:00 – 8:30 p.m. at the Lady's Island Elementary School, cafeteria, 73 Chowan Creek Bluff, Beaufort, SC

### LIBPA OFFICERS SLATE FOR 2017

The nominating committee has submitted the following slate of 2017 officers for the member's consideration. Additional nominations for each office will be accepted at the January 10<sup>th</sup> monthly meeting.

President – Mark Weeks

Vice President – Chet Houston

Secretary – Cherimie Crane Weatherford

Treasurer – Pat Harvey Palmer

Nominations. Mark Weeks has served on the LIBPA Board of Directors as Secretary and Vice President. Chet Houston is a retired Marine and Executive Director of the local Habitat for Humanity. Cherimie Crane Weatherford is the owner of a local business, a realtor and frequent author of articles for various local newspapers. Pat Harvey Palmer has graciously agreed to serve another term as Treasurer.

A few words regarding Cathy Crocker is in order. She will depart the position of Secretary with our sincere appreciation for a job well done. She served as Secretary for three years (2007, 2008, 2009) and in response to a great deal of pleading she returned to serve another two years (2015, 2016). So after serving 5 years as the secretary of LIBPA; Cathy will (once again) retire from the position. She is a special lady who has contributed a great deal over a long period of time to our organization.

Kevin Dukes, after serving 2 years as Vice President and 2 years as President, will move to the position of Past President on the Board of Directors. He has provided solid leadership to the organization and represented LIBPA in various political forums as the moderator and also to the Chamber of Commerce.

**LIBPA MEMBERSHIP**

As part of the annual membership drive LIBPA extends a special invitation for membership to all residents and businesses. Everyone is eligible to be a member. You should consider membership if you desire to stay informed about what is happening or going to happen on Lady's Island and want to have a voice in the direction of this community.

**WHAT DOES LIBPA DO?** LIBPA serves as the voice of Lady's Island. As such, it maintains an active community information web site ([www.libpa.org](http://www.libpa.org)), publishes a monthly newsletter, conducts a monthly meeting with guest speakers of community interest and represents Lady's Island on numerous committees and at various governmental meetings. In the past, LIBPA developed and sponsored the present zoning for Lady's Island and currently monitors all requests for major new development.

**WHAT ARE LIBPA'S PRESENT PROJECTS.** To promote the development of Crystal Lake as a community park, encourage excellence in the public and private schools on the island, guide the growth of Lady's Island, support efforts to attract new businesses to the island and assist existing businesses.

**YOU CAN JOIN BY FILLING OUT THE FOLLOWING FORM AND RETURNING IT WITH YOUR MEMBERSHIP FEE (\$45) OR JOIN THROUGH OUR WEB SITE AND WE WILL BILL YOU.**

**MEMBERSHIP APPLICATION**

Name/Company: \_\_\_\_\_

Attn: \_\_\_\_\_

Address: \_\_\_\_\_

Phone: \_\_\_\_\_ Web Site \_\_\_\_\_

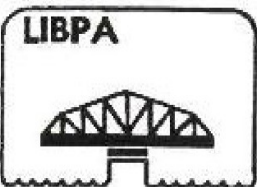
Newsletter preference: U. S. Mail  E-Mail  E-mail Address: \_\_\_\_\_

Type of membership: Business  Residential  Civic Org.

Business category for directory \_\_\_\_\_

Please mail along with your membership fee of \$45 to:  
LIBPA  
182-D Sea Island Parkway  
Lady's Island, S. C. 29907

The Lady's Island Business and Professional Association, organized in 1981, is a state chartered, civic organization with the objective of promoting the planned, orderly development and growth of Lady's Island. It also will sponsor such projects and events that contribute to the general welfare of the island, its residents, its businesses and its professional offices. Membership eligibility embraces businesses, professional practices, island residents and other such individuals having an interest in the welfare of Lady's Island. Annual dues are \$45. All correspondence should be forwarded to LIBPA, 182-D Sea Island Pkwy, Lady's Island, SC.29907. You can now join through our web site at [www.LIBPA.org](http://www.LIBPA.org). Comments regarding the content of this newsletter should be forwarded to Jim Hicks at [jbhicks@hargray.com](mailto:jbhicks@hargray.com).



**LIBPA**  
**182-D Sea Island Parkway**  
**Lady's Island, SC 29907**  
LIBPA Website: [www.libpa.org](http://www.libpa.org)

